

# ASCA



LOADCELL  
SERIES



- Hermetically sealed (IP68)
- Stainless steel construction
- 20 m integral shielded cable
- 1 year warranty

The heavy capacity series of compression load cells are ideal for multiple load cell compression applications such as motor truck scales, railroad track scales and heavy duty tank weighing systems. These compression load cells are available in 22 680kg, 45 360kg and 54 430kg.

These load cells are fabricated from stainless steel to provide the ultimate in protection when caustic, corrosive or wet environments are encountered. Load cells are hermetically sealed for absolute water protection (IP68)

## MECHANICAL DATA

Rated Capacity:	22 680, 45360 & 54 430kg
Minimum Dead Load:	250, 500kg
Safe Load Limit:	150% R.C.
Ultimate Load:	300% R.C.
Deflection at R.C:	0.33 mm
Spring Element Material:	17-4 PH
Net Weight:	6 kg

## CERTIFICATE DATA

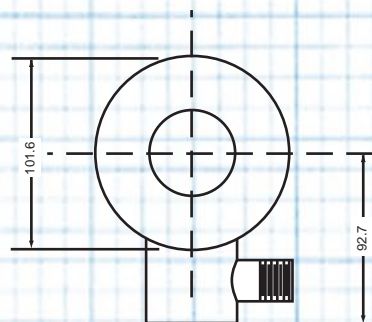
Issuing Body:	NTEP OIML-NMI
Certificate Number:	89-042A3 N493
Accuracy Class:	IIIL C3
Maximum Number of Load Cell	
Intervals, $n_{max}$	10000 3000
Single/Multiple:	M
Humidity Symbol:	CH
Minimum Load Cell Verification Interval $V_{min}$	OIML 2.3,4.5 & 5.4kg

## ELECTRICAL DATA

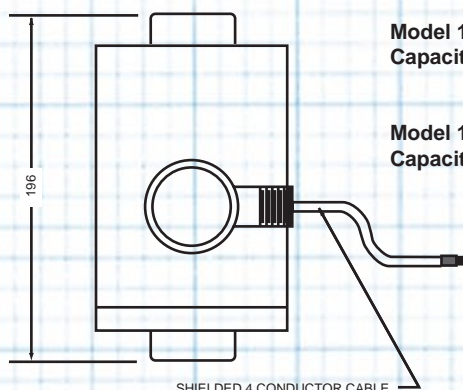
Rated Output:	2mV/V
Excitation Voltage, Recommended:	10VDC
Excitation Voltage, Maximum:	15VDC
Cable Length:	20m
Terminal Resistance	
Excitation:	1150 ± 12 ohms
Signal:	1050 ± 10 ohms
Zero Load Output:	±1% R.C.
Insulation Resistance:	5000 megaohms at 50VDC

## ENVIRONMENT DATA

Temperature Compensation Range:	-10° to +40°C
Operating Temperature Range:	-29° to +93°C
Construction & Protection Code:	CP-67 HU, IP68
Barometric Pressure Effect on Zero Load Output:	1V (min)/1kPa



**Model 50K-ASCA**  
Capacity: 22680 kg



**Model 100K-ASCA**  
Capacity: 45360 kg

**Model 120K-ASCA**  
Capacity: 54430 kg

All dimensions are in mm unless otherwise noted  
HEIGHT DIMENSION INCLUDES CUPS.