



**AUSTRALIAN
WEIGHING
EQUIPMENT**
www.awe.com.au



AWE GROUP

SCORPION ONBOARD WEIGHER

The underbody weighing solution suitable for almost all trucks



Scorpion load cell

**Instant
Weight
Readings**



AWE100P





/ SCORPION ONBOARD WEIGHER

About the Scorpion Onboard Weigher

The Scorpion Underbody Weigher is a rugged and versatile weighing system which fits almost any truck. It has a high accuracy of 0.2% of vehicle capacity and allows the driver to weigh their load anywhere, anytime. This makes it ideal for truck drivers loading and unloading frequently and need to check weight on the spot rather than risk overload fines or damage to the vehicle.

Enjoy the benefits of using the Scorpion Onboard weigher which include:

- ▶ Check your trucks load anywhere, anytime, instantly whilst in a stationary position
- ▶ Save time and money - select a suitable tip site by knowing your weights
- ▶ Eliminate fines
- ▶ Saves trips to the weighbridge which eliminates lost income due to out-of-route driving
- ▶ Reduces under/over loading trucks
- ▶ Improved safety
- ▶ Reduce damage to your trucks from overloading
- ▶ Comply with CoR legislation and SOLAS

How it works

Installation requires the separation of the truck bed from the chassis. The Scorpion load cell is then mounted to the truck chassis and the truck body/bed placed on top of it.

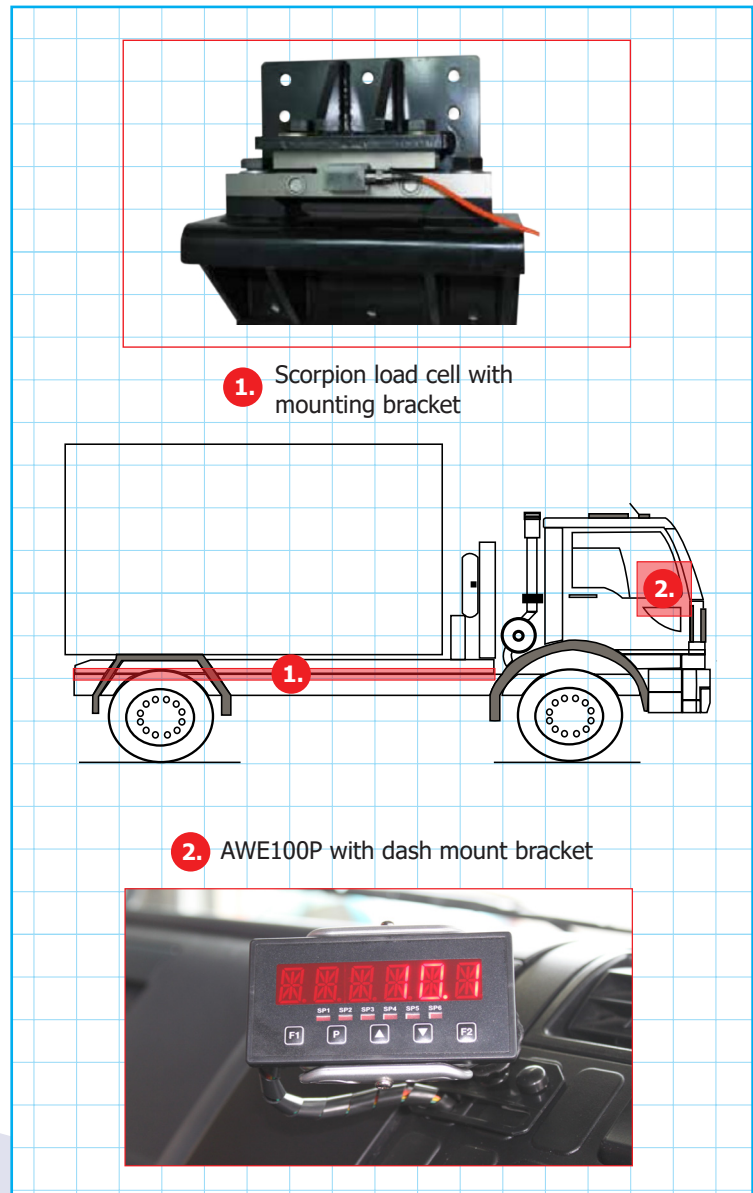
When the truck is loaded with weigh, the load cell senses the pressure applied to the truck bed and sends data to the indicator. A weight reading is displayed on the dash mounted AWE100P indicator instantly for the operator.

Features

- ▶ No loss of lifting capacity
- ▶ Multiple choices of instruments and outputs to link printer and other peripheral devices
- ▶ Can be retro-fitted to ANY truck
- ▶ Load cells made from 4340 high tensile steel
- ▶ Hermetically sealed IP67 load cells work in harsh environments

Suitable vehicles

- ▶ Flatbeds
- ▶ Semi-trailers
- ▶ Tautliners
- ▶ Dump trucks
- ▶ Tankers
- ▶ Tipper
- ▶ Refuse collection trucks
- ▶ Hooklift bin trucks

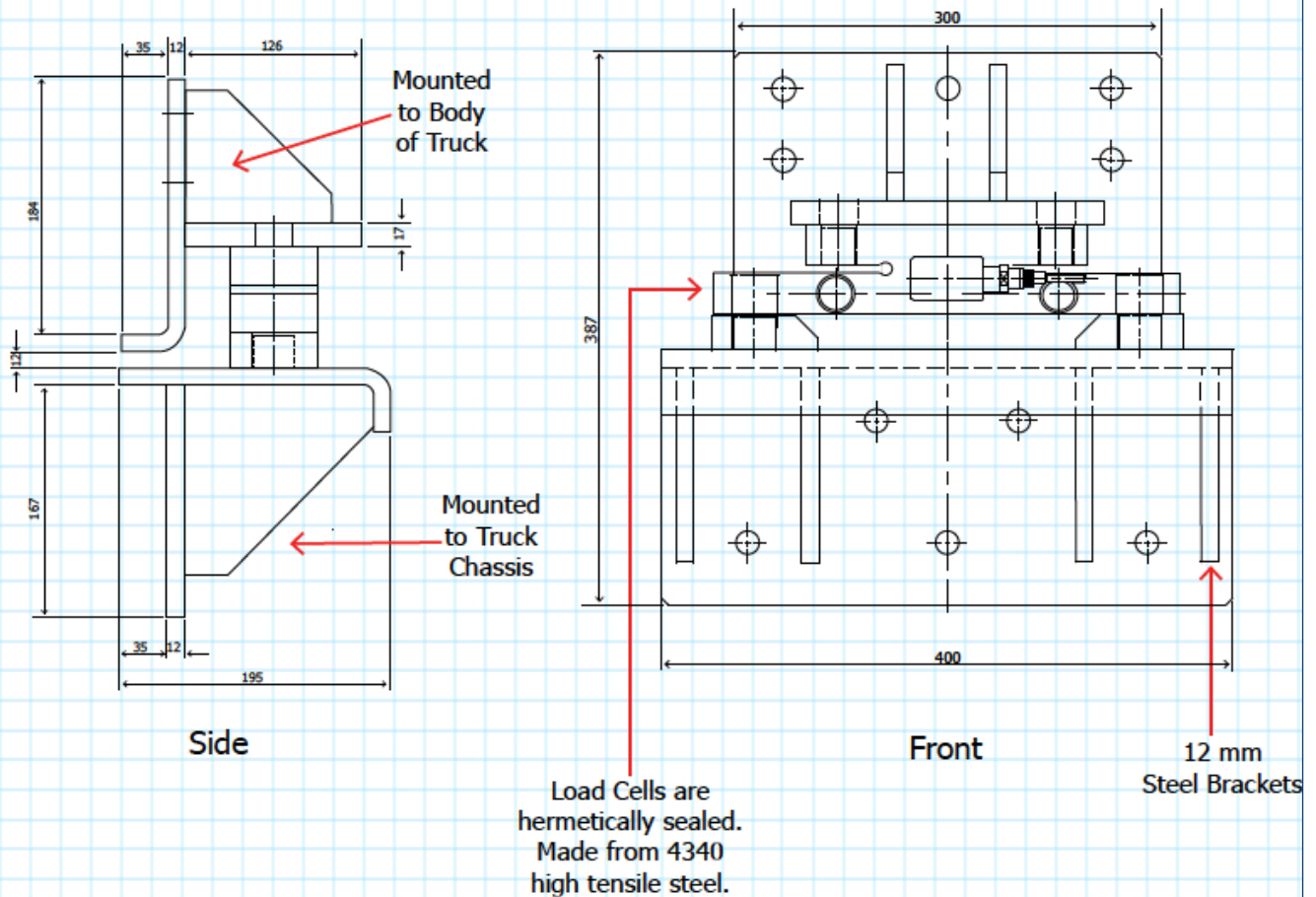




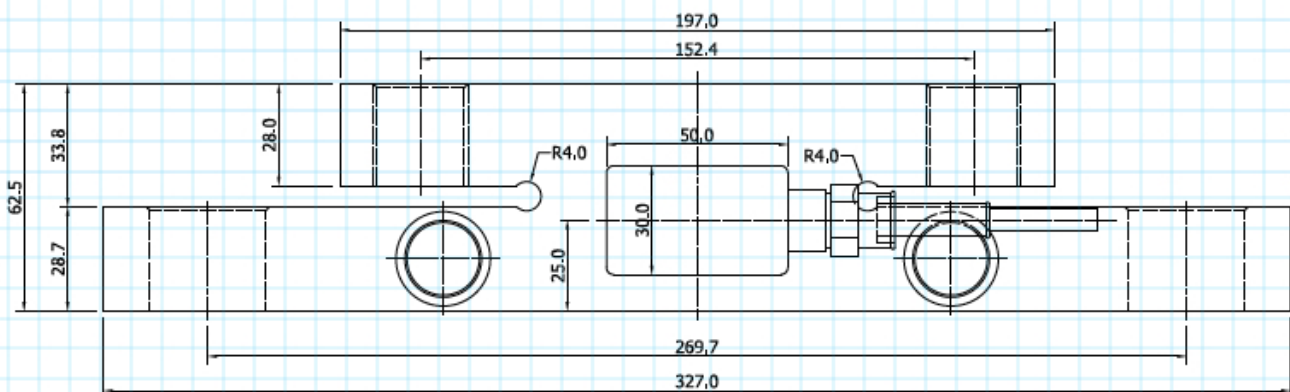
/ SCORPION ONBOARD WEIGHER

Scorpion underbody weigher mounting kit dimensions standard

Mounting Dimensions



Loadcell Dimensions



Note: Mounting kits can be manufactured to any dimensions as required

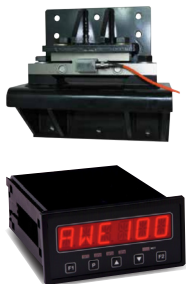


/ SCORPION ONBOARD WEIGHER

Scorpion underbody weigher load cell specifications

Type	Digital
Load cell material	4340 high tensile steel
Weight	6.3 KG
Load cell protection	IP67
Static capacity	10,000 KG
Rated output (mV/V)	1.50 (±) 0.015
Nonlinearity	(±) 0.03% of full scale
Repeatability	(±) 0.03% of full scale
Creep (30 minutes)	(±) 0.02% of full scale
Zero balance	(±) 1.0% of full scale
Input resistance	350 Ω
Output resistance	350 Ω
Excitation voltage	Up to 15V (DC)
Cable	- Orange polyurethane 4 core - 10 metres
Cable colour code	Input Excitation: Red (+) Black (-) Signal: Green (+) White (-)

Scorpion underbody weigher order codes

	Order Code	Product	Key Features
	SCORPIONUBL4*		<ul style="list-style-type: none"> ▶ Check your trucks load anywhere, anytime, instantly whilst in a stationary position ▶ 0.2% accuracy of truck capacity ▶ Save time and money - know your weight to select a suitable tip site ▶ Multiple choices of instruments and outputs to link printer and other peripheral devices ▶ Can be retro-fitted to ANY truck ▶ Load cells made from 4340 high tensile steel ▶ Hermetically sealed IP67 load cells work in harsh environments ▶ Wide range power supply designed for mobile equipment - 9Vdc to 70Vdc ▶ Standard and custom mounting kits to fit a wide range truck and attachment manufacturers ▶ Custom thread and load cell designs available for a wide range of trucks and bodies
	SCORPIONUBM4*		
	SCORPIONUBL6*		
	SCORPIONUBM6*		
	AWE100PLV	Indicator	
	BLUETONGUEPRINT	Printer	



**AUSTRALIAN
WEIGHING
EQUIPMENT**
www.awe.com.au

Weighing Equipment / Onboard Weighing

/ SCORPION ONBOARD WEIGHER

AWE - The Best in the Business

AWE has built a reputation for providing world class products and services to customers in a wide range of industries for many unique applications. All of our products come with the AWE Quality Guarantee which means they have been tested to meet or exceed the specifications and requirements of your application.

Any servicing, installation and technical support issues you encounter can be addressed either onsite or remotely by our engineers and tradesmen who carry qualifications as:

- ▶ Licensed Tradesmen
- ▶ Mechanical Engineers
- ▶ Electrical Engineers
- ▶ Structural Engineers
- ▶ Draftsmen
- ▶ Fitter & Turners
- ▶ Boilermakers
- ▶ Fully Qualified Scale Makers
- ▶ Electronic Technicians
- ▶ Instrument Fitters
- ▶ Electricians
- ▶ Service Technicians
- ▶ Project Managers
- ▶ Formworkers
- ▶ Concreters

Call AWE today. We will find the right solution for your individual needs.



If you have questions about

- **weighing equipment**
- **packaging equipment**
- **bulk materials handling**
- **componentry**

then call the sales team at *AWE Group* to find the right solution for your individual needs

AWE Product Range



Weighbridges



Load Cells



Scales



Crane Scales



Indicators



Packaging Equipment



Onboard Weighing



Batching Consoles



Test Weights



Maintenance



**AUSTRALIAN
WEIGHING
EQUIPMENT**
www.awe.com.au

Weighing Equipment / Onboard Weighing

/ SCORPION ONBOARD WEIGHER

Who is "Australian Weighing Equipment Group"

Jeff & Trevor Baillie started Australian Weighing Equipment (or AWE) in 1981, focusing on weighing solutions based on engineering principles. For the last 30 years AWE has built its reputation as a leading supplier of robust weighing, packaging & bulk handling equipment. Our innovative engineering and continuous product developments have led to designs that will stand up to the rigours and demands of your applications.

AWE has increased its investment in manufacturing facilities with a new 3,200sq/m factory in Sydney which has:

- ▶ A CNC Machine Shop
- ▶ Heavy Metal Fabrication Shop
- ▶ Larger work areas for our team of qualified tradesman

Acquisitions of Bradwood Packaging and Dendy Packaging and Design Engineering has increased our packaging and engineering experience.

In 2008, AWE established a manufacturing facility in China - AWE Group Packaging and Bulk Materials Handling Equipment, a purpose-built 5,000sq/m factory in Suzhou China (70kms From Shanghai).

All of the products we offer are Australian designed and manufactured under our strict quality control system in our own factories both locally and internationally.

COMPANIES IN THE AWE GROUP



Australian Weighing
Equipment P/L



All State Machining



Rite-Weigh Scales P/L



Bradwood Packaging P/L



Bendfab P/L



Dendy Packaging (Australia)



China Weighing &
Packaging Machinery



Australian Weighing Equipment - Sydney Office

16 Kerr Road
Ingleburn NSW 2565
Ph: (+61) 2 8717 3333
E: sales@awe.com.au
www.awe.com.au



Rite-Weigh Scales Melbourne Office

37 Barrie Road
Tullamarine, VIC, 3043
Ph: (+61) 3 9330 1011
E: sales@rite-weigh.com.au



Rite-Weigh Scales Brisbane Office

7 Darnick Street,
Underwood, QLD, 4119
Ph: (+61) 7 3423 1388
E: sales@rite-weigh.com.au



China Weighing & Packaging Machinery - China Factory

No.66 Jiangpu Rd,
Singapore Industrial Park,
Suzhou City, China
Ph: (+86) 512 6292 3790
E: sales@chinaweighing.com



Visit www.youtube.com/user/AustWeighing and watch our products and services in action. You can also see our new product releases in Industrial Weighing Systems, Packaging Machinery & Bulk Handling Solutions.

Dealer's Information:

For links to AWE website please
scan your smartphone here

